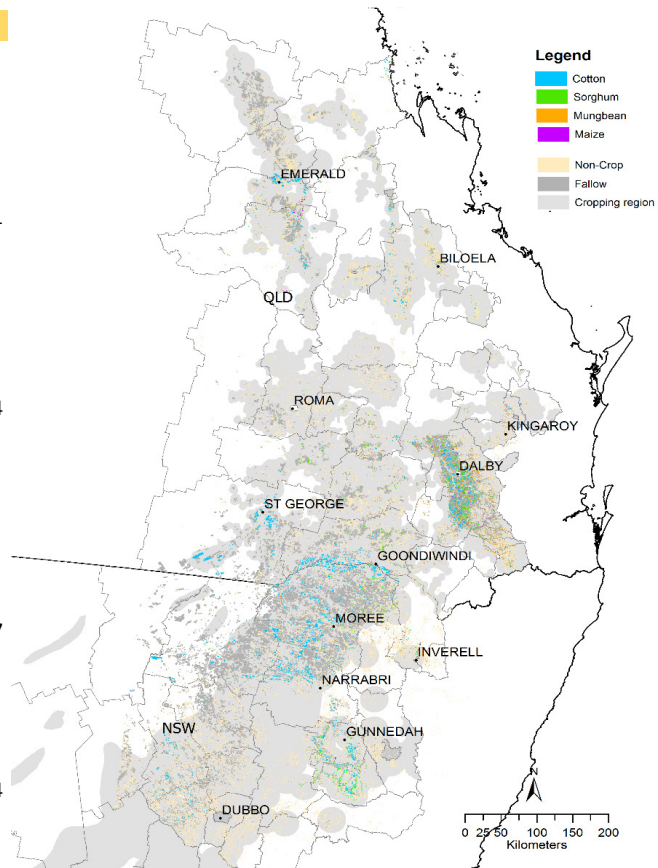


Region	Crop	Area (ha)	Prod (tons)
CQ	Cotton	59,531	
CQ	Fallow	413,979	
CQ	Maize	4,269	
CQ	Mungbean	4,085	
CQ	Non Crop	503,821	
CQ	Sorghum	2,135	4,821
Total Harvested Area		70,019	
NNSW	Cotton	263,245	
NNSW	Fallow	2,051,559	
NNSW	Mungbean	10,436	
NNSW	Non Crop	1,696,542	
NNSW	Sorghum	40,379	195,394
Total Harvested Area		314,060	
SEQ	Cotton	90,718	
SEQ	Fallow	424,010	
SEQ	Maize	12,896	
SEQ	Mungbean	97,507	
SEQ	Non Crop	381,476	
SEQ	Sorghum	47,018	162,877
Total Harvested Area		248,140	
SWQ	Cotton	79,156	
SWQ	Fallow	742,049	
SWQ	Non Crop	687,903	
SWQ	Sorghum	21,477	51,954
Total All Crops		100,633	
		Cotton	492,650
		Sorghum	111,009
NEAUS Total Summer		732,852	415,046



Queensland Alliance for
Agriculture & Food Innovation



Win and iPad by recording your fields by telling us what you have planted at:

<http://www.paddockwatch.com.au/#/home;>

<http://www.qaafi.uq.edu.au/seasonal-crop-outlook-wheat>