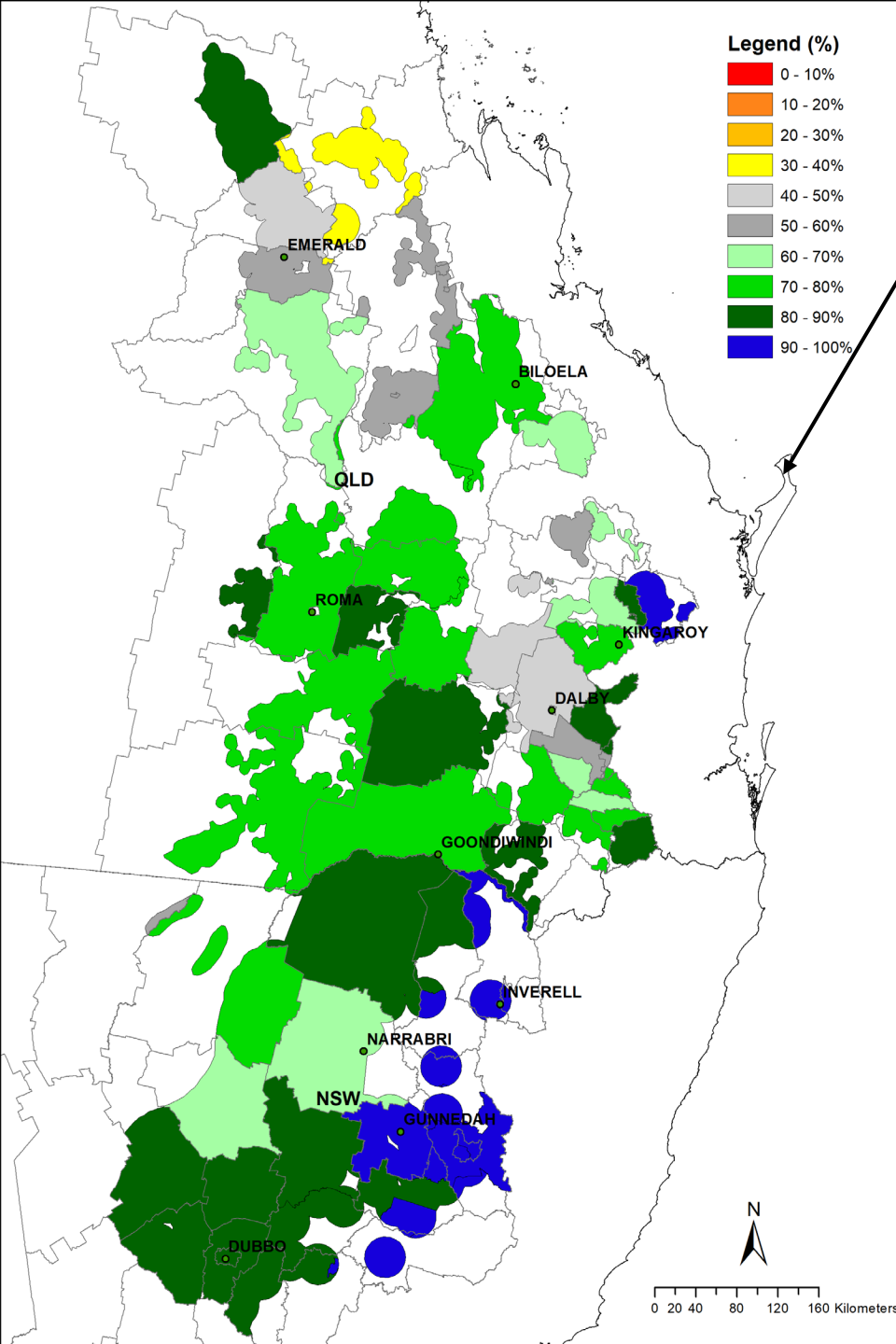
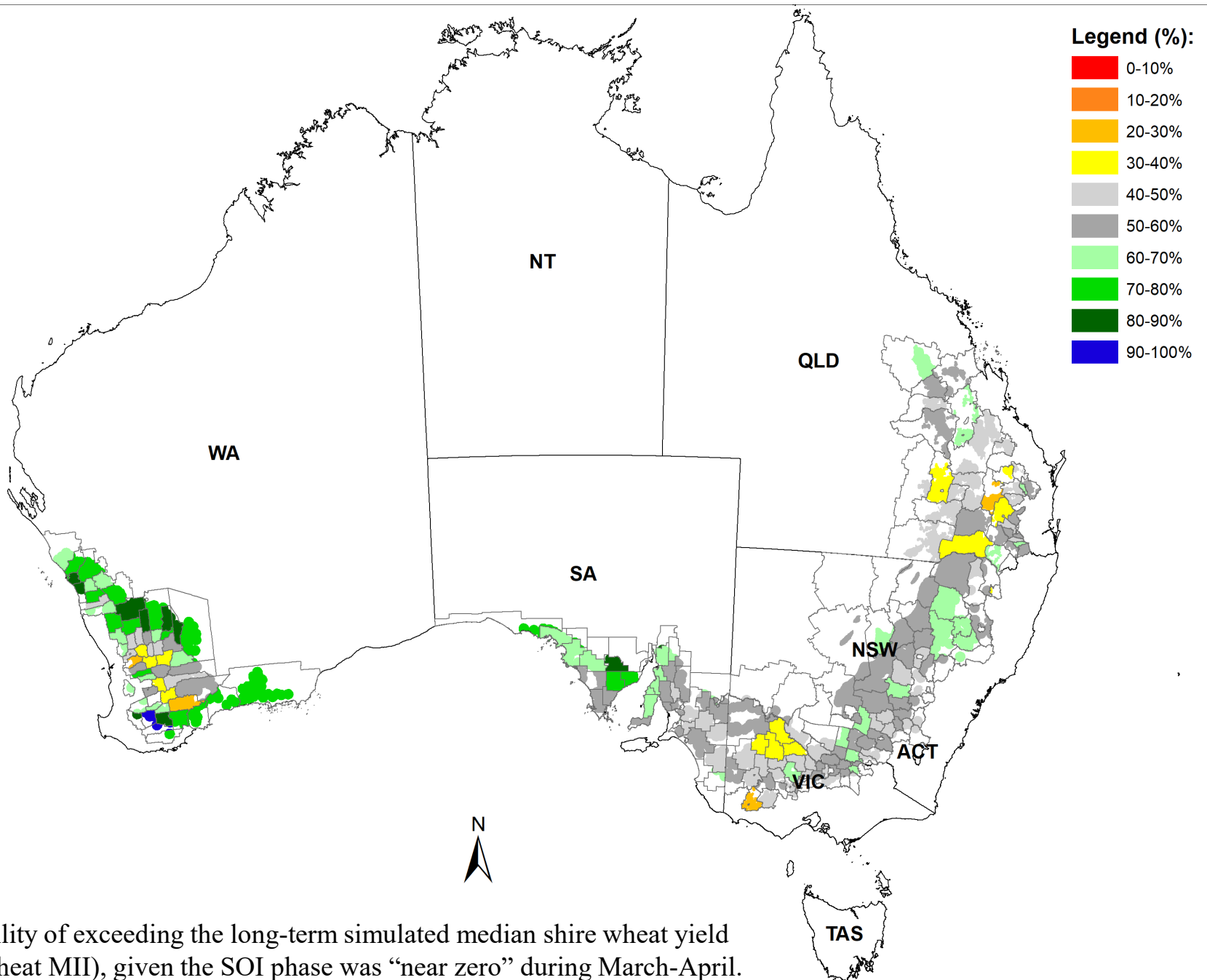


Simulated shire wheat yield long-term median (OZ-Wheat MII, from 1901-2021)

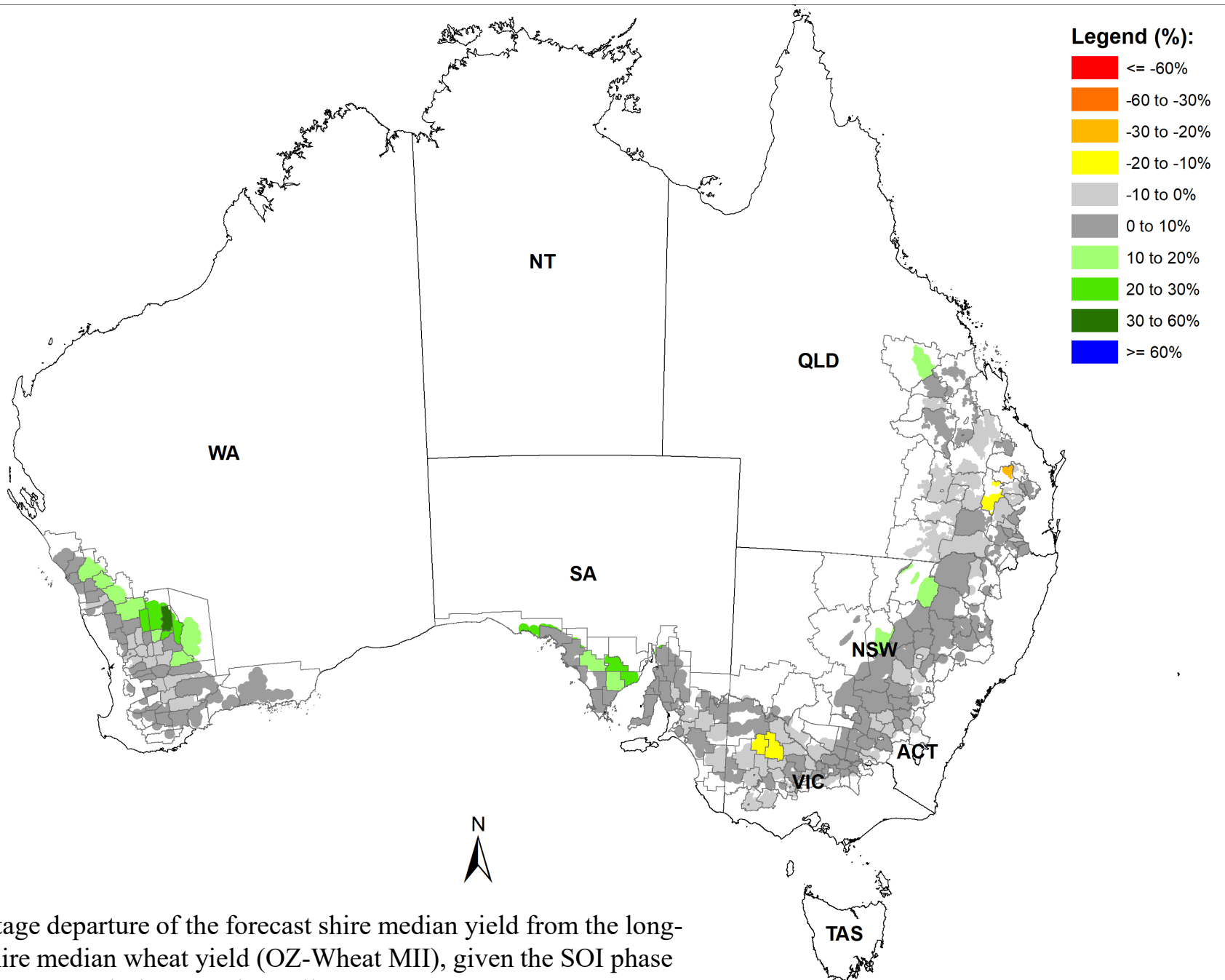


Aggregated soil water recharge status (%) for NE AUS cropping region as at 1<sup>st</sup> May 2021. Fallow simulated from 1 October 2020 with 10% available water at that time (using APSIM)

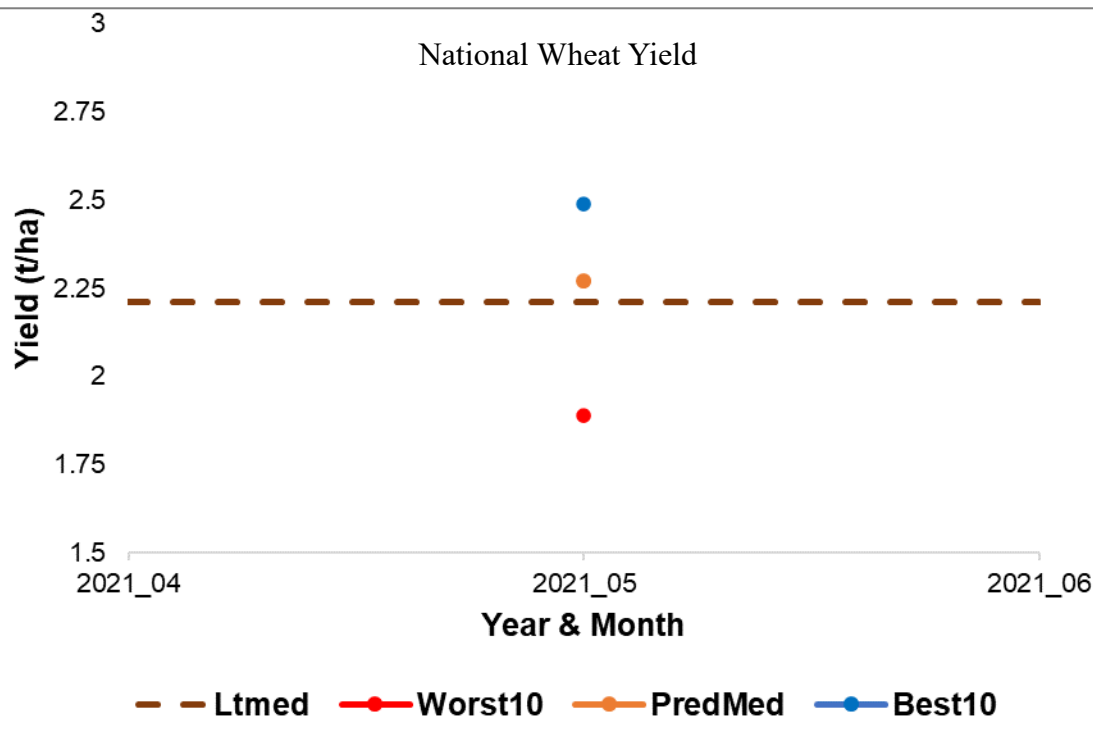
Aggregated plant available water content (PAWC) at shire scale



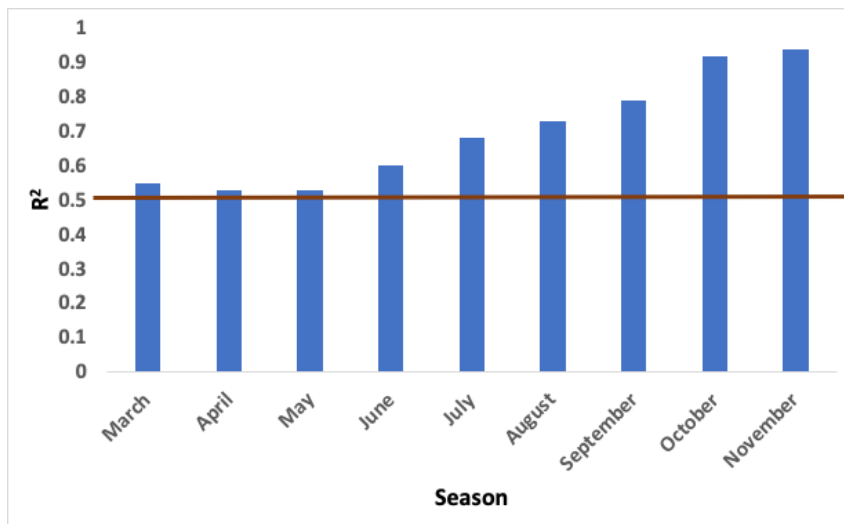
Probability of exceeding the long-term simulated median shire wheat yield (OZ-Wheat MII), given the SOI phase was “near zero” during March-April.



Percentage departure of the forecast shire median yield from the long-term shire median wheat yield (OZ-Wheat MII), given the SOI phase was “near zero” during March-April.



**1<sup>st</sup> May 2021 – State and National wheat outlook range (Worst10 and Best10) and forecast median (PredMed) while Ltmed = Long-term median yield**



## **OZ-Wheat MII: regional scale crop simulation model developed by UQ QAAFI.**

### ***Descriptive note:***

The seasonal wheat outlook is based on the integration of (i) a simple agro-climatic wheat stress index model (Oz-Wheat MII) (i.e. Bare fallow routine - Ritchie, 1972; Wheat stress index model adapted from - Fitzpatrick and Nix, 1969; Nix and Fitzpatrick, 1969), which is sensitive to water deficit or excess during the growing season, (ii) actual climate data up to the forecasting date and (iii) projected climate data after that date. These projected data are drawn from historical analogue years based on similarity to the prevailing phase of the Southern Oscillation Index (SOI) (Stone et al., 1996). The Oz-Wheat model is run from 1 October the year before sowing in order to account for the influence of the summer fallow on starting soil moisture conditions. The model input parameters for each shire (i.e. potential available water content, planting rain & stress index period) have been selected based on the best fit when calibrated against actual shire wheat yields from Australian Bureau of Statistics (ABS) for the period 1976 – 2000, 2005, 2010 & 2015 (MII). Cross validated spatial correlation when predicting the shire wheat yields for the 2000 season (MI) was 0.8 across all main wheat producing shires in Australia (Potgieter et. al., 2006). For the updated MII 75% of the 237 shire have  $R^2 > 0.60$ .