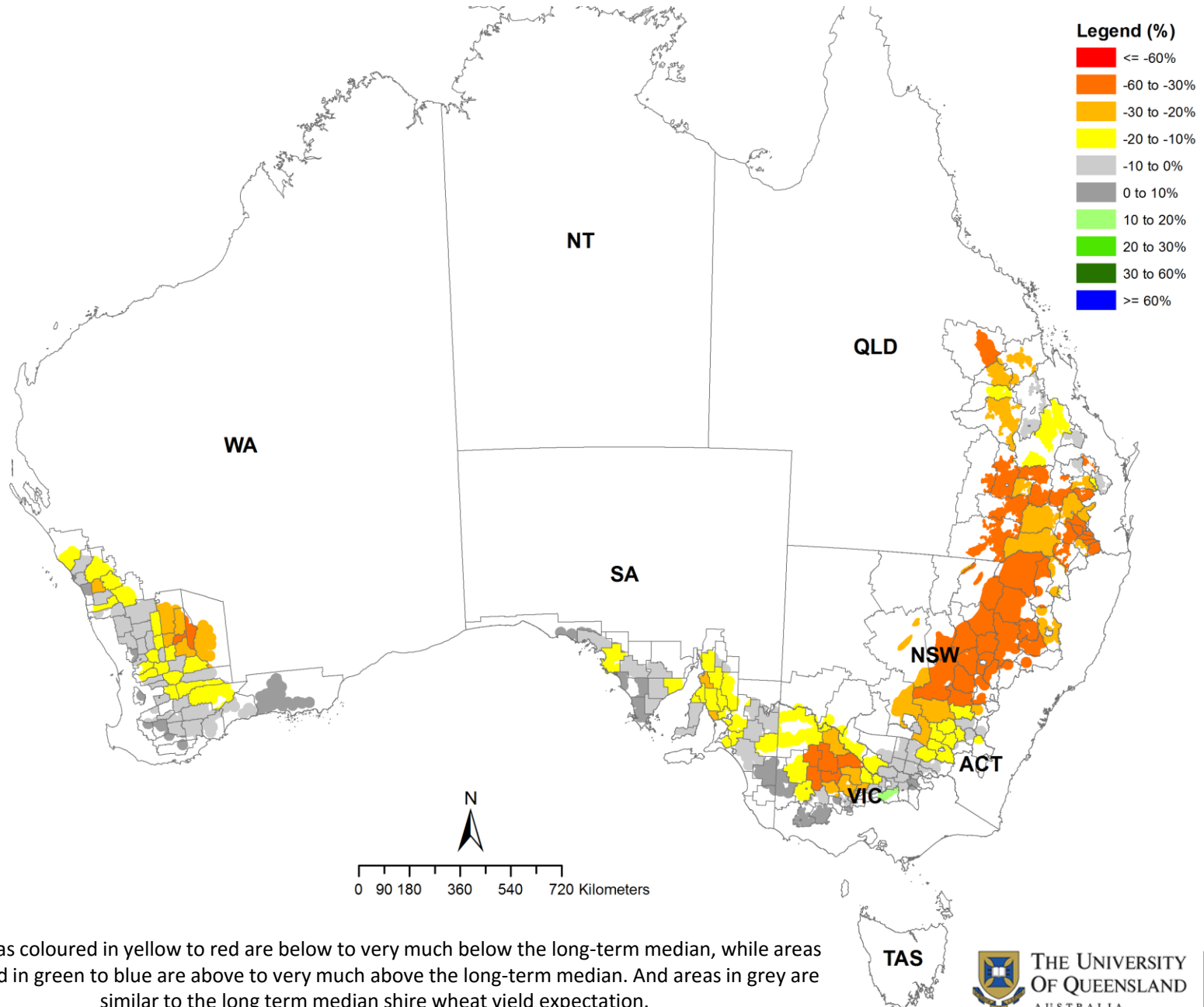


Percentage departure of the forecast shire median yield from the long-term shire median wheat yield (OZ-Wheat MII), given the SOI phase was “rapidly falling” during July-August.



Any areas coloured in yellow to red are below to very much below the long-term median, while areas coloured in green to blue are above to very much above the long-term median. And areas in grey are similar to the long term median shire wheat yield expectation.

TAS