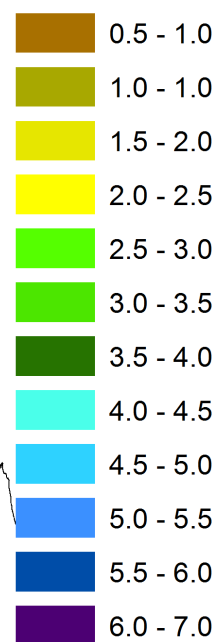
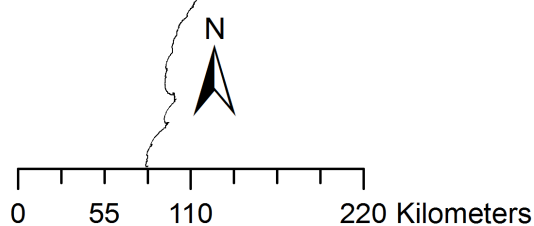


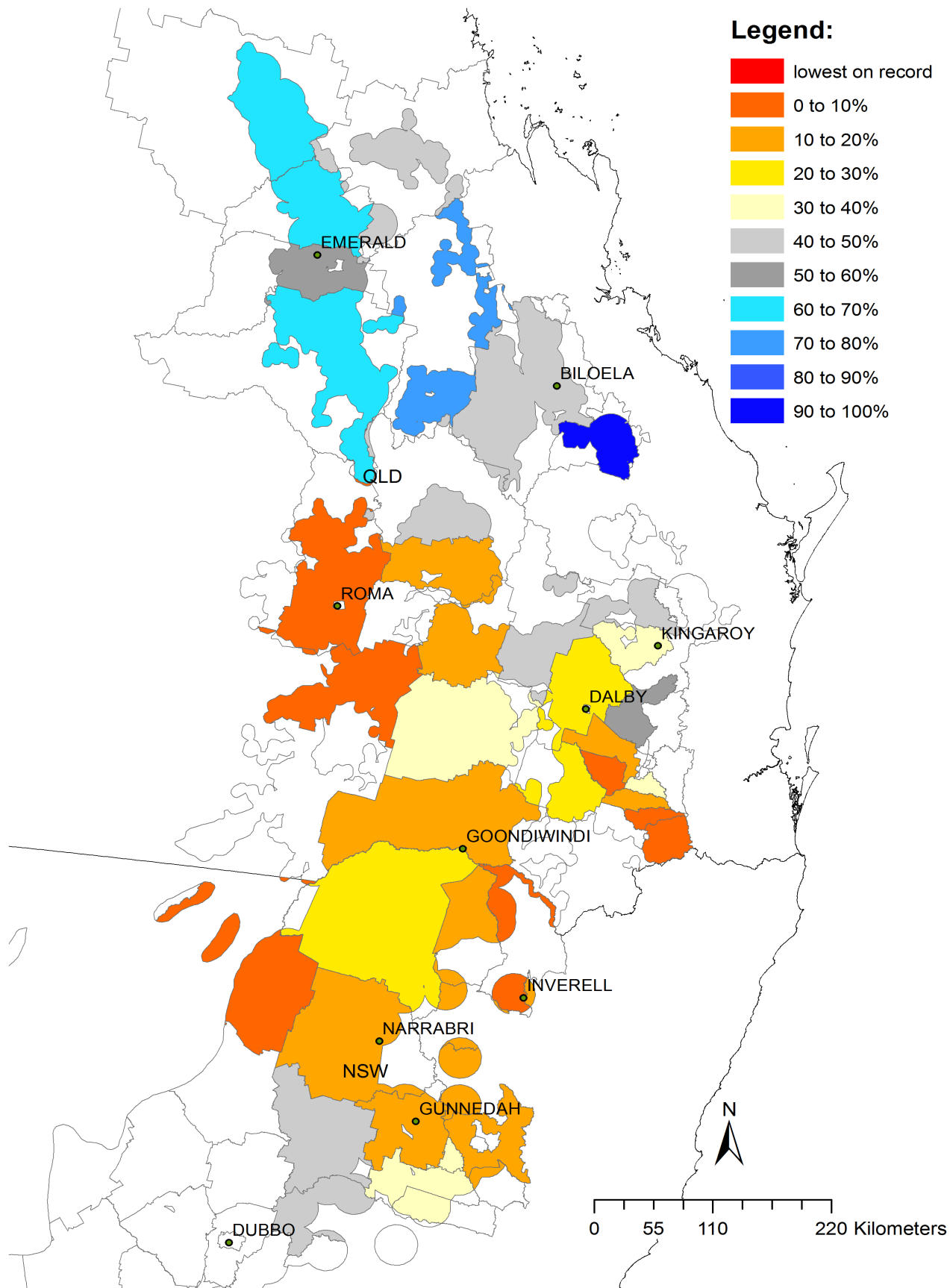
# Legend (t/ha):



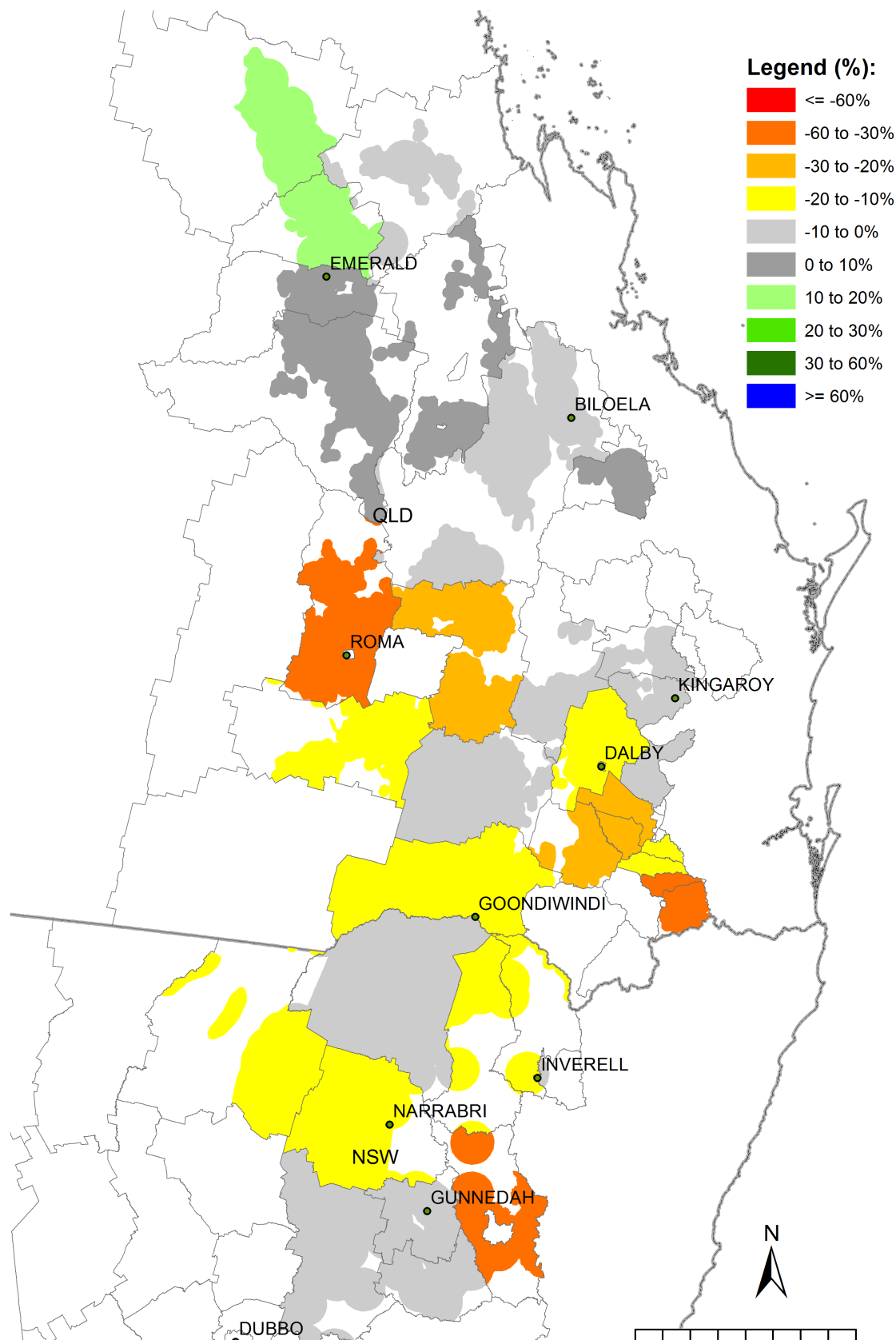
**Simulated median  
shire sorghum yield  
(1901 – 2016) using  
2017 technology**



Outputs generated using Oz-Sorghum MII

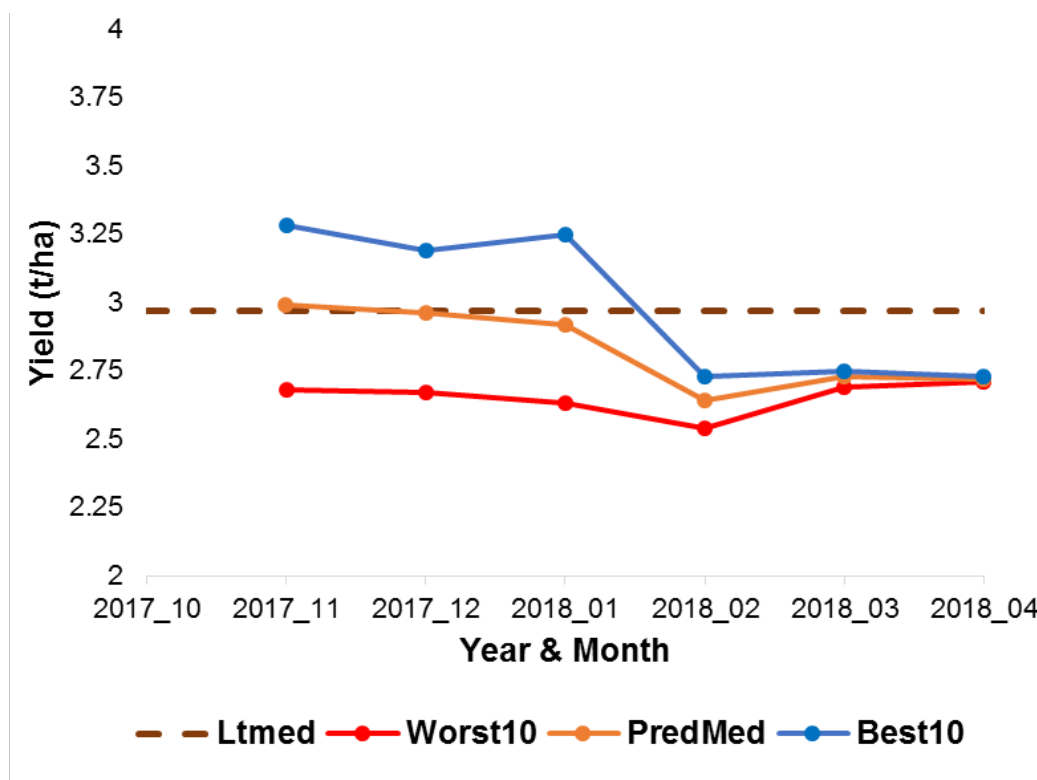


Forecast median shire yield ranked relative to all years (%), given SOI phase was "rapidly rising" at the end of March.



Percentage departure of the current forecast median shire yield from the long-term shire median yield, given SOI phase was "rapidly rising" at the end of March.

**Forecast as at 1<sup>st</sup> April 2018, given SOI phase was “rapidly rising” at the end of March (y-axis and table values are measured in tons/hectares; “No” in table = climatology)**



Region	Year	Month	Phase	Worst10	PredMed	Best10	NoP10	NoP50	NoP90	Ltmed	Pred%	DFY%
AUS	2018	3	4	2.71	2.72	2.73	2.71	2.71	2.73	2.97	15	-8
NSW	2018	3	4	2.98	2.98	2.99	2.98	2.98	2.99	3.26	11	-9
QLD	2018	3	4	2.24	2.26	2.29	2.24	2.26	2.29	2.5	26	-10
SEQ	2018	3	4	2.88	2.89	2.9	2.88	2.89	2.91	3.43	22	-16
CQ	2018	3	4	2.26	2.31	2.42	2.26	2.3	2.42	2.19	69	5
SWQ	2018	3	4	1.78	1.78	1.78	1.78	1.78	1.78	2.12	13	-16
NNSW	2018	3	4	3.31	3.31	3.31	3.31	3.31	3.31	3.64	14	-9
SNSW	2018	3	4	2.18	2.18	2.18	2.18	2.18	2.18	2.33	4	-6

Ltmed: long-term median, Worst10: 10<sup>th</sup>, PredMed: 50<sup>th</sup> and Best10: 90<sup>th</sup> percentiles;  
DFY – Percentage departure of forecast median yield from long-term median yield.